

Fact Sheet



Company overview

GlobeImmune is a private biopharmaceutical company developing targeted molecular immunogens (Tarmogens[®]) for the treatment of cancer and infectious diseases. GlobeImmune has two products in randomized Phase 2 clinical trials. GI-5005 is being evaluated in patients with chronic hepatitis C infection, as both a front-line therapy in combination with standard of care, and as a monotherapy for second line salvage in interferon intolerant patients. GI-4000 is being evaluated in patients with pancreas, lung and colorectal cancers caused by mutations in the Ras oncogene product. To date, Tarmogens have been generally well-tolerated, and shown to generate antigen-specific T cell immune responses and improved clinical outcomes in patients.

The Tarmogen technology is a proprietary platform that uses recombinant yeast, engineered to express disease-specific antigens. Tarmogens naturally couple a patient's innate immune response against the yeast, with an antigen specific T cell response against cells throughout the body that express the same protein contained in the yeast. Tarmogens can be given repeatedly, boosting the T cell response with each subsequent dose. Tarmogens are produced using fermentation processes which can be simply and economically scaled up to manufacturing levels.

Clinical Programs

GI-5005

The GI-5005 Tarmogen expresses a fusion protein composed of the NS3 and Core hepatitis C virus proteins. These proteins are abundantly expressed in infected cells and are required for viral replication. GlobeImmune has recently reported interim data from a randomized Phase 2 study of GI-5005 in combination with standard of care (SOC) versus SOC alone.

In clinical studies to date, GI-5005:

- ◆ Has been well tolerated to date as monotherapy in chronic HCV patients
- ◆ Can convert a patient's T cell response profile to match the profile of a subject who clears the virus naturally following acute HCV infection
- ◆ Causes a dose-dependent normalization in ALT levels
- ◆ Showed a 2.6-fold improvement in rapid virologic response in combination with SOC, in patients with a high viral load, versus SOC alone
- ◆ Showed a 2-fold improvement in the rate of viral clearance in combination with SOC versus SOC alone

GI-4000

The GI-4000 series of Tarmogens express the seven most common mutations in the Ras oncoprotein. Mutations in Ras are seen in >160,000 new cases of cancer per year in the US alone and predict poor response to other therapies. An open-label Phase 1 study of 33 end-stage, Ras-mutation positive colorectal and pancreatic cancer patients demonstrated that GI-4000 Tarmogens:

- ◆ Has been well tolerated to date with no product-related dose-limiting toxicities, serious adverse events or discontinuations
- ◆ 90% of patients demonstrated an antigen and mutation specific T cell response

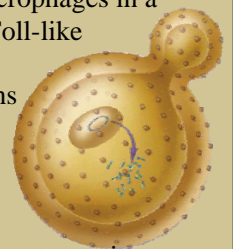
A 100 patient randomized, placebo-controlled Phase 2 trial is ongoing in resected pancreatic cancer patients.

2008 Milestones

- ◆ Initiated a Phase 2 clinical trial evaluating GI-4000 in non-small cell lung cancer (NSCLC)
- ◆ Completed enrollment in the randomized Phase 2 trial of GI-5005 for chronic hepatitis C infection
- ◆ Presented interim Phase 2 data for GI-5005 at AASLD meeting
- ◆ Complete enrollment of the randomized Phase 2 study of GI-4000 in resected pancreas cancer by year end

Tarmogen Technology

Tarmogens are whole, heat-killed recombinant *S. cerevisiae* yeast that express one or more disease-related proteins. Tarmogens are avidly taken up by antigen presenting cells, such as dendritic cells and macrophages in a process mediated by Toll-like receptors found on the cell surface. Tarmogens generate activated killer T cells capable of locating and destroying cells expressing the same target protein.



Leadership

Executive Management

Timothy C. Rodell, M.D.

President & Chief Executive Officer

David Apelian, M.D., Ph.D., MBA

Chief Medical Officer

Jeffrey Rona

Chief Business Officer

Alex Franzusoff, Ph.D.

VP Research & Development

John Frenz, Ph.D.

VP Operations & Manufacturing

Board of Directors

Darren Carroll

Lilly Ventures

Ralph E. Christoffersen, Ph.D.

Morgenthaler Ventures

J. William Freytag, Ph.D.

Ehud Geller, Ph.D.

Medica Venture Partners

Augustine J. Lawlor

HealthCare Ventures

Paul A. Mieval Ph. D., CFA

Wexford Capital LLC

Dan Mitchell

Sequel Venture Partners

Timothy C. Rodell, M.D.

President & Chief Executive Officer

Investors (bold denotes lead)

Adams Street Partners

Biogen, Inc.

Boston Life Science Venture

Celgene, Inc.

China Investment & Development

Eminent Venture Capital

GC&H

Genentech, Inc.

HealthCare Ventures

Lilly Ventures

Medica Venture Partners

Mellon Family Investment Co.

Morgenthaler Ventures

PAC-LINK Bio-Venture Capital

Partners Healthcare

Sequel Venture Partners

WRF Capital

Wexford Capital

Pipeline

INFECTIOUS DISEASES			ONCOLOGY			
PRODUCT	ANTIGEN	INDICATION	RESEARCH	PRECLINICAL	PHASE 1	PHASE 2
GI-5005	NS3/Core	Hepatitis C Infection	[Progress bar across all stages]			
GI-8000		Influenza	[Progress bar across Research and Preclinical]			
GI-9000		Fungal	[Progress bar across Research and Preclinical]			
GI-4000	Ras	Resected Pancreas Cancer	[Progress bar across all stages]			
		First line consolidation in NSCLC	[Progress bar across all stages]			
		Locally-advanced Pancreas Cancer	[Progress bar across all stages]			
GI-6207	CEA	NSCLC	[Progress bar across all stages]			
GI-3000	EGFR	Glioblastoma	[Progress bar across all stages]			
GI-10000	Bcr/Abl (T315I)	TAME-CML	[Progress bar across all stages]			

Investigator-sponsored Clinical Trials

National Cancer Institute

Dr. Jeffrey Schlom

Preclinical & Phase 1 study of carcino-embryonic antigen Tarmogens (GI-6207) in NSCLC

Memorial Sloan Kettering Cancer Center

Dr. Christopher Azzoli

Phase 2 study of mutated Ras Tarmogens (GI-4000) in NSCLC

University of Pennsylvania

Dr. Carl June

Phase 2 study of mutated Ras Tarmogens (GI-4000) in locally advanced pancreas

Financing History

Series A: \$8 Million

Led by Sequel Venture Partners

June 2003

Series B: \$38.3 Million

Led by Lilly Ventures

September 2005

Series C: \$41.2 Million

Led by Wexford Capital

July 2007

GlobeImmune, Inc.

1450 Infinite Dr.

Louisville CO 80027 USA

Phone: 1-303-625-2700

Fax: 1-303-625-2710

E-mail: busdev@globeimmune.com

TARGETED MOLECULAR IMMUNOTHERAPY

